



## AP602 SIP VoIP Paging Terminal

Voicefinder AP602 SIP paging terminal provides high-performance SIP signaling based VoIP paging service for bank, securities, military, large enterprise, and government. AP602 SIP paging terminal should be used together with SIP paging server for dedicated IP paging service, or can be connected to legacy SIP call manager like as IP phones for SIP paging service. Generally, SIP call manager supports the SIP paging service for simple paging service via IP phones. Using SIP VoIP signaling and internal 40watt digital amplifier, AP602 performs SIP paging service for overall room paging announcement. At front side, this device provides UP, DOWN volume control button for easy speaker volume control.

AP602 SIP paging terminal provides excellent performance and satisfaction for integrated security management environment like as intrusion detection application (government oil station, military, national power plant, etc). Installation and management is very simple. Beginners can handle the device easily.

AddPac SIP paging service solution consists of SIP paging server, SIP paging management system and AP602, AP1605 SIP paging terminals. Designed on the foundation of high performance embedded RISC CPU + Voice DSP, AP602 SIP paging terminal supports two(2) 10/100Mbps fast ethernet interface, one(1) port RS232C console port. Providing built-in 40watt internal digital amplifier, AP602 SIP paging terminal is designed to support VoIP (Voice over IP) paging service without external amplifier via directly connected to SPEKER. And, this paging terminal supports high quality 16KHz G.722 voice codec beside traditional 8KHz G.711, G.726, G729A, G.7231.1,etc. At rear side, this device supports I2C interface and Alarm Input 1-Port, Relay Output 2-Port for various application services.

## APOS Internetworking Software

APOS™(AddPac Internetworking Operating System) is AddPac's unique software which supports data, voice, video and security. It provides scalability, reliability, stability and QoS for internetworking solutions. It also provides optimized performance and industry standard network functionality with easy-to-use, easy-to-installation and maintenance.

## Product Highlights

- High Performance SIP VoIP Paging Terminal for Complete IP based VoIP Broadcasting Solution
- High Performance RISC + DSP Processor Architectures
- Optimum Voice Quality on Internet and Broadband Networks
- Support various VoIP codec: G.722 (16KHz), G.711, G.726, G.729a, G723.1, etc
- Internal built-in digital AMP. : 40Watt at 8ohm Speaker : (Option)
- Multiple point-to-point IP voice broadcasting (unicasting scheme)
- SIP protocol support compliant with IETF RFC3261 (or RFC2543)
- 3.5mm SPK, MIC Interface Support
- 2-port 10/100Mbps fast ethernet interface (RJ45)
- Support Up, Down Volume Control Button
- I/O Interface Support : Alarm 1-Port, Relay 1-Port, I2C Interface
- 1-port RS232C Interface(RJ45) for Command Line Interface
- On-AIR Indication LED Support
- High-performance IP-Routing Capability with Reliability
- APOS Guarantees Scalability, Reliability, Stability
- Easy System Firmware Upgrade On the Basis of High Performance Embedded RISC CPU and Programmable DSP Chip-set
- Remote Software Upgrade using FTP & TFTP

## AP602 Applications

- IP based VoIP Paging Terminal Solution
- IP Telephony Paging Terminal Solution
- Automatic SIP VoIP Paging (Sensor Interworking)
- Integrated Security Management System Solution

## Hardware Specifications

<b>Main Chassis CPU</b>	High Solidity Steel Chassis High Performance RISC + DSP (Digital Signal Processor) Integrated Processor
<b>Memory</b>	4MB Flash Memory 32MB SDRAM Main Memory
<b>Network Interface</b>	1-port 10/100Mbps Ethernet (LAN 0) for WAN Interface 1-port 10/100Mbps Ethernet (LAN 1) for LAN Interface
<b>Audio Interface</b>	1-CH 3.5mm Audio Input (MIC) 1-CH 3.5mm Audio Output (SPK)
<b>Internal Built-in AMP.</b>	40Watt Digital AMP. at 8ohm Speaker Terminal Block Connector (SPK+ -), DC24V External Extra Power Adaptor.
<b>Volume Control</b>	Up, Down Volume Control Button
<b>Console Interface</b>	1-Port RS232C Console Interface for CLI (Command Line Interface)
<b>I/O Interface</b>	Alarm Input 1-Port Relay Output 1-Port I2C Interface for External Control
<b>Operation Environment</b>	Temperature 0°C ~ +45°C (operating), -40°C ~ +85°C (storage), Humidity 5% ~ 95%
<b>Power Supply</b>	AC110~220VAC 50/60Hz Free Voltage, 5V 2Amp. Digital AMP. Power : DC24V 2.5Amp
<b>Dimension</b>	H x W x D : (28mm x 125mm x 90mm)
<b>Weight</b>	0.5Kg

## Audio Service and Signaling Protocol Features

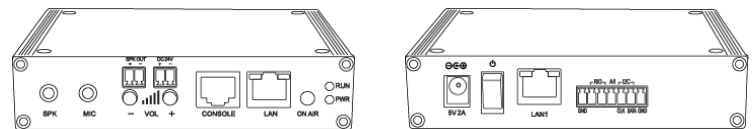
<b>Voice and Audio Codec</b>	G.722(16Hz) , G.711, G.723.1, G.726, G.729a, etc
<b>VoIP Signaling Protocol</b>	SIP VoIP Signaling Protocol SIP Proxy Server Interoperability Option :ITU-T H.323 Gateway, Gatekeeper Support VAD, CNG, Dynamic Jitter Buffer Operation Detection and Generation, RFC 2833 Compliant
<b>Voice Processing</b>	Enhanced QoS Management for Voice Traffic
<b>DTMF</b>	Local MIC to AMP.output broadcasting Support
<b>Voice QoS</b>	
<b>Local Announcement</b>	

## WAN, IP Routing and Other Features

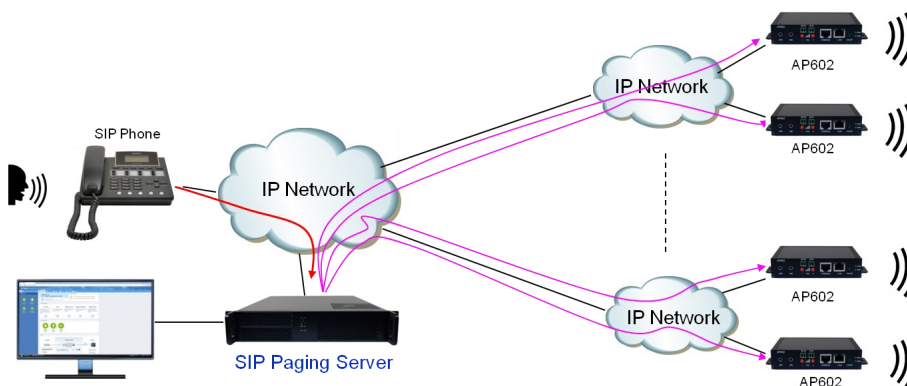
<b>WAN Protocol</b>	Point-to-Point Protocol (PPPoE) for ADSL
<b>IP Routing</b>	IPv4 Static and IEEE 802.1Q VLAN Routing
<b>Network Management</b>	Standard SNMP Agent (MIB v2) Support, Telnet, Web Based Management, Remote Firmware (APOS) Upgrade via FTP/TFTP Support IP Packet Filtering, Access List, Access Control and Data Protections, Enable/Disable for Specific Protocols
<b>Security Features</b>	Multi-level User Account Management, Auto-disconnect for Telnet/Console Sessions, PPP User Authentication Support (PAP/CHAP)
<b>Operation &amp; Management</b>	Performance Analyzing (Process, CPU, Interface), Configuration Backup and Restore for APOS Management, Debugging and Diagnosis Features, System Booting/Rebooting through Watch-Dog, Data Logging Features, IP Traffic Statistics through Accounting Support
<b>Other Features</b>	DHCP Server and Relay, Network Address Translation (NAT), Port Address Translation (PAT), IEEE Standard Transparent Bridging (Spanning Tree Bridging and Concurrent Routing Bridging Protocol), Network Time Protocol (NTP), Cisco Style Command Line Interface (CLI), DNS Proxy, UPnP, MAC Address Filter Service

## IP Broadcasting (Paging) Service(AddPac IP Broadcasting Solu-

<b>IP Paging Server</b>	AddPac Proprietary Protocol or SIP Standard VoIP Signaling Support
<b>IP-PBX Signaling Protocol</b>	SIP Protocol between IP-PBX and AP602
<b>Transmission Protocol</b>	RTP/UDP (Realtime Transport Protocol) RTSP (Realtime Streaming Protocol) : Option Unicast & Multicast Broadcasting Service Scheme
<b>Paging Scheme</b>	SIP Phone Initiated Real-Time Paging , SIP Phone Initiated Real-Time Paging via PBX, SIP Phone Initiated Real-Time Paging to PBX, Web Controller Initiated Real-Time Paging, Add-hoc Paging with IVR, Scheduled Paging, etc
<b>SIP Paging Scenario</b>	
<b>SIP Paging Management</b>	Web based SIP Paging Management Support



## Network Diagram



AP-SPMS : SIP Paging Management System

## Ordering Information

- AP602 SIP VoIP Paging Terminal
- Built-in 40Watt Digital AMP. : Option
- CAB-LAN Ethernet Cable
- External Power Adaptor : 5V 2A
- External Power Adaptor for AMP. : DC24V 2.5A